

4 SPEED TRANSMISSION (EX. EQ)
 P.T.O. OPENING: S.A.E. STD. LARGE ON RH. SIDE
 GEAR: TRANS. DRIVE 36T.-7P.-22 1/2 P.A.
 SPEED RATIO: 395 R.P.M. TO 1000 R.P.M. ENG.
 ROTATION: OPPOSITE ENGINE
 ENGINE SPEED GOVERNED AT 3000 R.P.M.

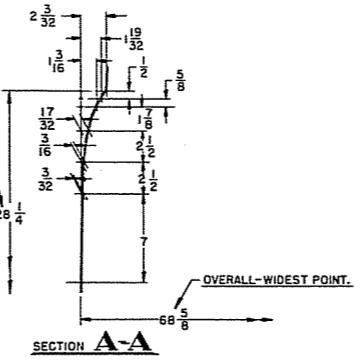
TIRES	FRONT	REAR	RIM SIZE	A	B	C	D	E	F
6.00-16	4P	16	X4.00	58 7/8	61 1/4	27.43	8 5/32	13.39	2 1/2
6.00-16	6P	16	X4.00	58 7/8	61 1/4	27.43	8 5/32	13.48	2 1/2
6.50 16	6P	16	X4.50	58 7/8	61 1/4	27.18	8 7/16	13.77	2 1/2
6.00 18	6P	18	X3.62	58 7/8	61 1/4	27.43	9 7/16	14.69	2 1/2

M FRONT SPRINGS

LOAD (RATE LESS) PER SPRG PER SPRG	SPRG. NO.
9 7/16	900 228 1194190
9 3/4	950 415 1194198

L REAR SPRINGS

LOAD (RATE LESS) PER SPRG PER SPRG	SPRG. NO.
8 3/4	1200 200 590188
8 1/2	750 125 590164
9 1/4	1400 375 590194



BODY BUILDERS LAYOUT
108" W.B.—B-108